



Traffic Guidelines for the 2023-2024 School Year



Families with children only in grades K-6 will use the Lower School Lot.

Families with children in grades 7-12, and any lower school siblings, will use the Upper School Lot.

Notice that the left turn lanes into the school will be closed on Jones Maltzberger during pick up and drop off (with the exception of our initial wave of kinder students without siblings). This is necessary to keep traffic flowing on Jones Maltzberger. Please use the Church Parking Lot across from Driscoll Middle School to turn around if you are entering from Autry Pond Rd (see map below). All side roads, business parking lots, and private resident drives within the area should be avoided and respected and are not to be used for short cuts or turnarounds.

Follow your wave times: Please do not arrive before your wave time. The wave times are our best option to prevent vehicles from spilling out of our parking lot back onto Jones Maltzberger. **The wave timing is designed to decrease your wait time.** Students who have a later wave time will not be idle but will be using this time to read quietly and work on homework with a teacher present. **GHNO now has over 1500 students. Each vehicle that arrives before the assigned wave time will add an unnecessary number of vehicles to the parking lot and therefore hold up traffic.**

Wave times work best when everyone in our community abides by them. **If you arrive before your appropriate wave time you will be asked to leave the lot and re-queue in line.** You should not be turning onto Jones Maltzberger prior to your wave time. If you need a place to queue up prior to your wave time you may use the church parking lot across from Driscoll Middle School.

Placards: Each student will be issued a car placard with his or her assigned CurbSmart family number. Please display the placard on the dashboard in an area which is easily viewable from outside the vehicle. Placards will be color coded to easily identify which vehicles are arriving during the appropriate wave time. The placard system will help traffic captains identify cars and students who need to be called over the radio and who have not arrived at the lot at the appropriate time. This will also allow traffic captains and those entering names into the CurbSmart system to know which families have siblings or are in carpools. Contact: ghnoinfo@greatheartstxschools.org to request replacements.

Remain inside – and do not leave – your vehicle unattended during pick up and drop off. Follow the traffic attendants and officers’ directions at all times.

Notice: The city has mandated that officers issue tickets to any vehicle that is on Jones Maltzberger, that is stopped or standing and has opportunity to continue moving forward in any traffic lane. Vehicles that are parked or stopped off of the roadway, including the gravel portions, will also be ticketed. In the state of Texas, cell phones are not to be used while operating a motor vehicle, this includes inside the school lots. U-turns on Jones Maltzberger are dangerous and illegal. Please stick to the traffic guidelines to maximize safety, hospitality, and respect of others.

Drop Off

Drop off will run from 7:15-7:50AM in each lot. Please **do not arrive or queue in the lot before 7:10AM** so that faculty may enter the lot unrestricted. Do not unload until the traffic captain is present and gives the direction to unload. Vehicles should not leave until directed to do so and all students are clear.

Lower School	Wave Start Time	Student Priority
First Wave	7:15AM	Working Parents, intervention and tutoring assigned by teacher
Second Wave	7:25AM	General student body

Upper School	Wave Start Time	Student Priority
First Wave	7:15AM	Working Parents, student drivers, tutoring
Second Wave	7:25AM	General student body

Both schools will begin the pledges and morning announcements promptly at 7:50AM. **Families arriving after 7:50AM will need to park in the Lower School Lot and sign in with their children at the front desk.** In the



Traffic Guidelines for the 2023-2024 School Year

lower school, a morning tardy bell will ring at 7:50AM. **Students who are not in the building when the bell rings will be considered tardy.**

Pick Up

Pick up will run from 3:27PM – 4:10PM in each lot (1:25PM – 2:10PM on early release days).

Traffic will be monitored by our officers and entrance will be restricted between 3pm – 3:20pm. All appointment pick up and volunteers need to arrive before 3pm. Anyone arriving after this time will be asked to wait and join the regular pick up process. **Do not queue in the lots before 3:20PM** (1:20PM on early release days) so that early athletic release and kinder without siblings vehicles may enter and leave the lot unrestricted.

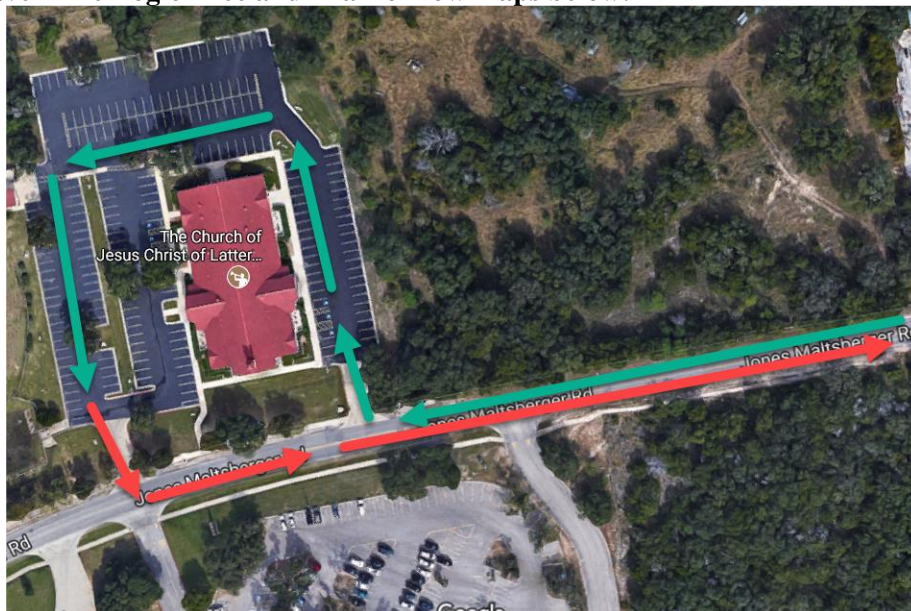
Lower School	Wave Arrival (ER)	Student Release	Grades
Orange Wave	3:15PM (1:15PM)	3:20PM	Kindergarten Only (no siblings)
Red Wave	3:30PM (1:30PM)	3:35PM	1 st – 2 nd Grade (and any younger siblings)
White Wave	3:40PM (1:40PM)	3:45PM	3 rd – 4 th Grade (and any younger siblings)
Blue Wave	3:50PM (1:50PM)	3:55PM	5 th – 6 th Grade (and any younger siblings)

Upper School	Wave Arrival (ER)	Student Release	Grades
7-12 Athletics	3:15PM (1:15PM)	3:20PM	Off Campus Upper School Athletes Only
N/A	N/A	3:27PM	Student Drivers Released
Orange Wave	3:20PM (1:20PM)	3:27PM	9 th – 12 th Grade Only (no K-8 siblings)
Red Wave	3:35PM (1:35PM)	3:40PM	7 th – 12 th Grade Only (no K-6 siblings)
White Wave	3:45PM (1:45PM)	3:50PM	7 th – 12 th Grade (with K-2 school siblings)
Blue Wave	3:55PM (1:55PM)	4:00PM	7 th – 12 th Grade (with 3-6 school siblings)

All students **MUST** be picked up by 4:10PM (2:10PM on early release days) unless they are enrolled in an after-school activity (please be aware clubs and many athletics will not begin until September). **After 4:10PM (2:10PM on early release days), students will be monitored by Athenaem/Homework Club and a charge of \$1 per minute will be incurred. Parents arriving after 4:10PM (2:10PM early release) will need to park in the Lower School Lot and sign their child out at the front desk.** A grace period will be extended for morning tardiness and for the pickup cut off time for the first two weeks of the school year to give families and faculty time to become familiar with the new routines.

More information will be forthcoming and available at Back to School/Meet the Teacher Night. Please email Jonathan.Maiorano@greatheartstxschools.org (lower school) or Craig.Hoyer@greatheartstxschools.org (upper school) with any questions and feedback that you may have.

Please see the Wave Time Logic Tree and Traffic Flow maps below:





Traffic Guidelines for the 2023-2024 School Year



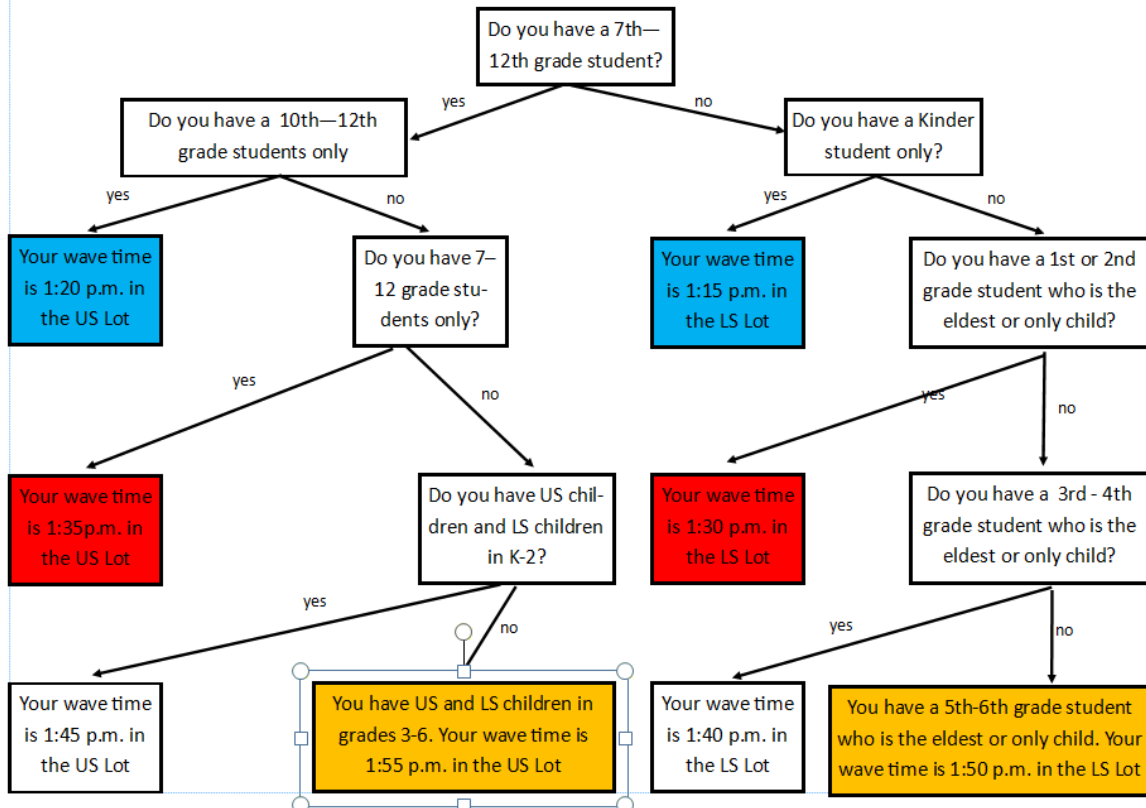
How do I find the lot I am supposed to use when I pick up my student? LS = Lower School, US = Upper School

How do I find the correct time to arrive at school for **Regular Day** pick-up (Wave)?



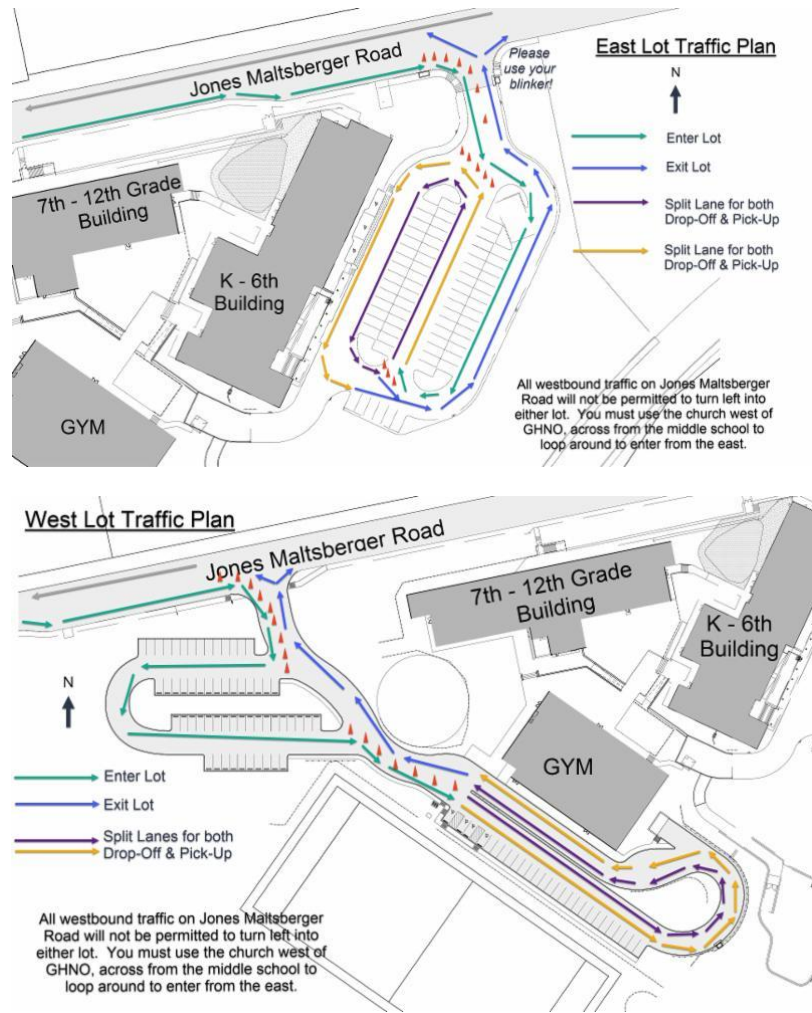
How do I find the lot I am supposed to use when I pick up my student? LS = Lower School, US = Upper School

How do I find the correct time to arrive at school for **early release** pick-up (Wave)?





Traffic Guidelines for the 2023-2024 School Year



Closed Campus

As Great Hearts Northern Oaks is situated on a street with commercial traffic and sidewalks do not completely span our street, **scholars should not walk up to school, nor can parents walk up to the school building to pick up their children. We are a closed campus for the safety of all scholars, our traffic officers, commercial traffic, and nearby businesses.**

For families that live within a one-mile radius of the school we have an additional policy that can be found in the traffic section of the family handbook. To know if you are eligible for this can easily be determined by performing a direction search between the school and student's home address on a mapping website or GPS device). Students who do not live within a mile radius of school must follow the regular dismissal process.